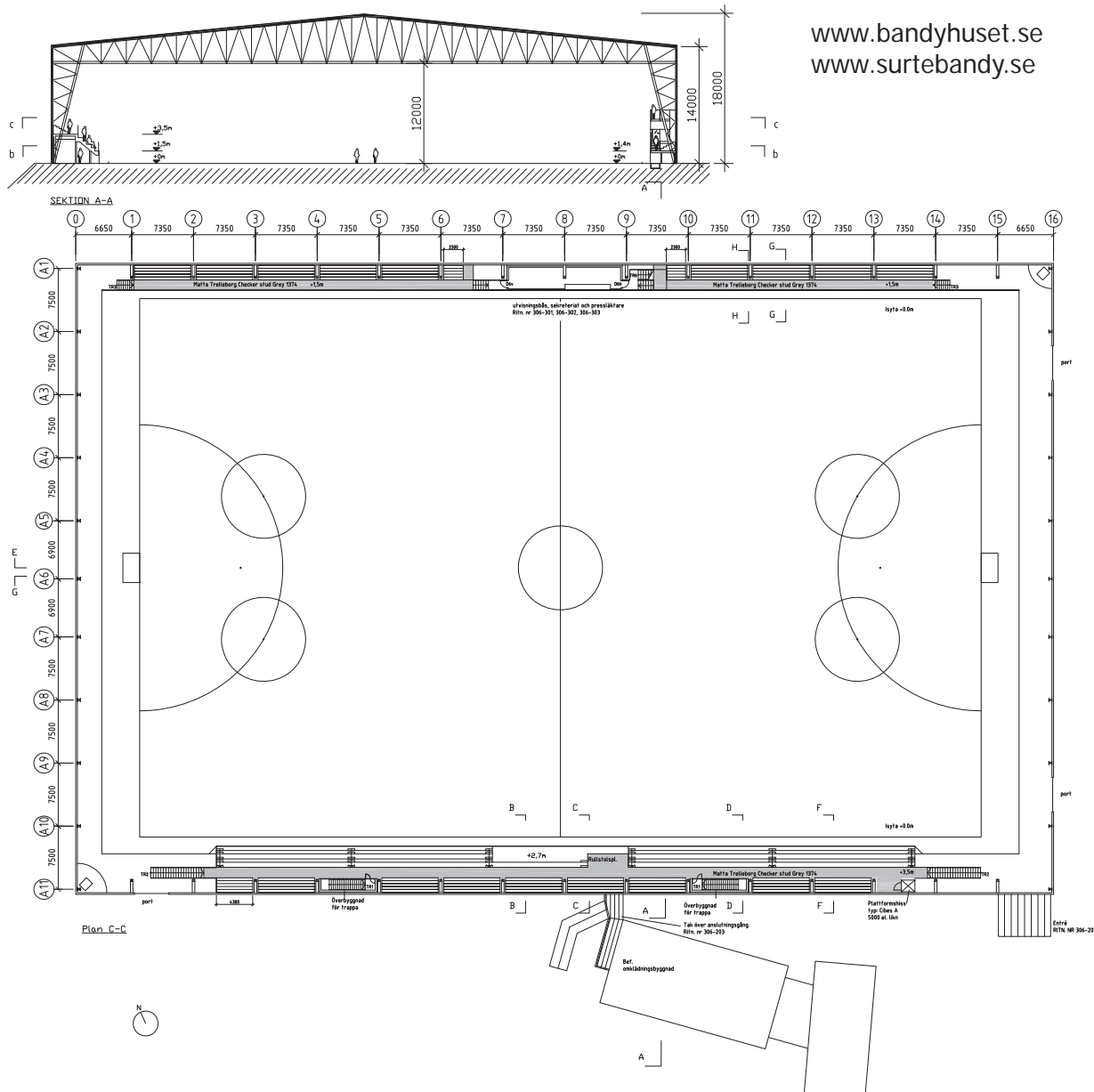


Bandyhall Bohus Ale-Surte Bandy

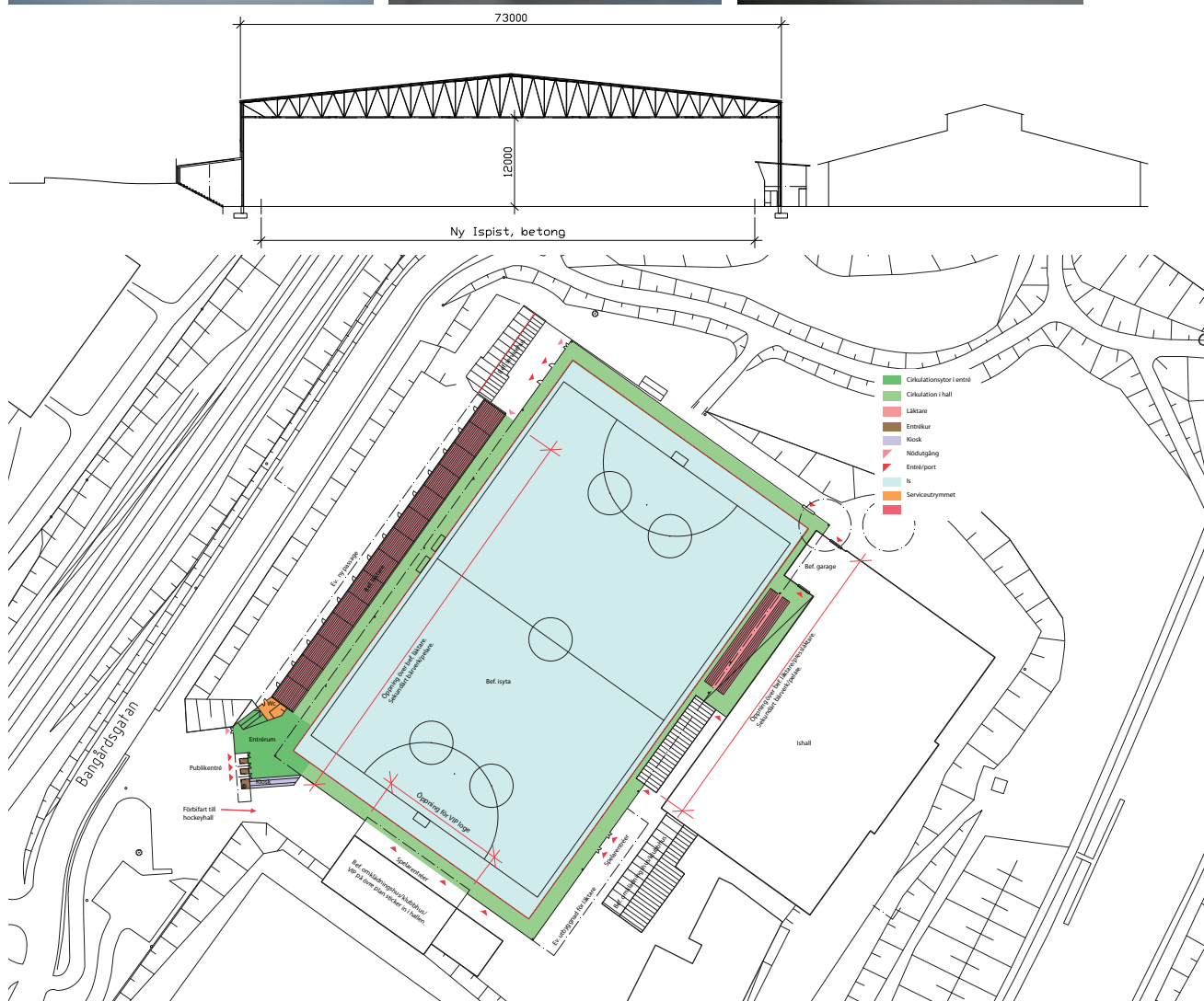
- none-insulated sheetmetal arena
- covers existing playingfield
- 75 m span, 2000 spectators
- grand opening 2007-11-17
- cost ~1 650 000 €



Motala bandyarena

- none insulated arena with a sheetmetal-facade
- covers existing playingfield, spectators platform and servicebuildings.
- 73 m span
- new entrance-building
- ongoing

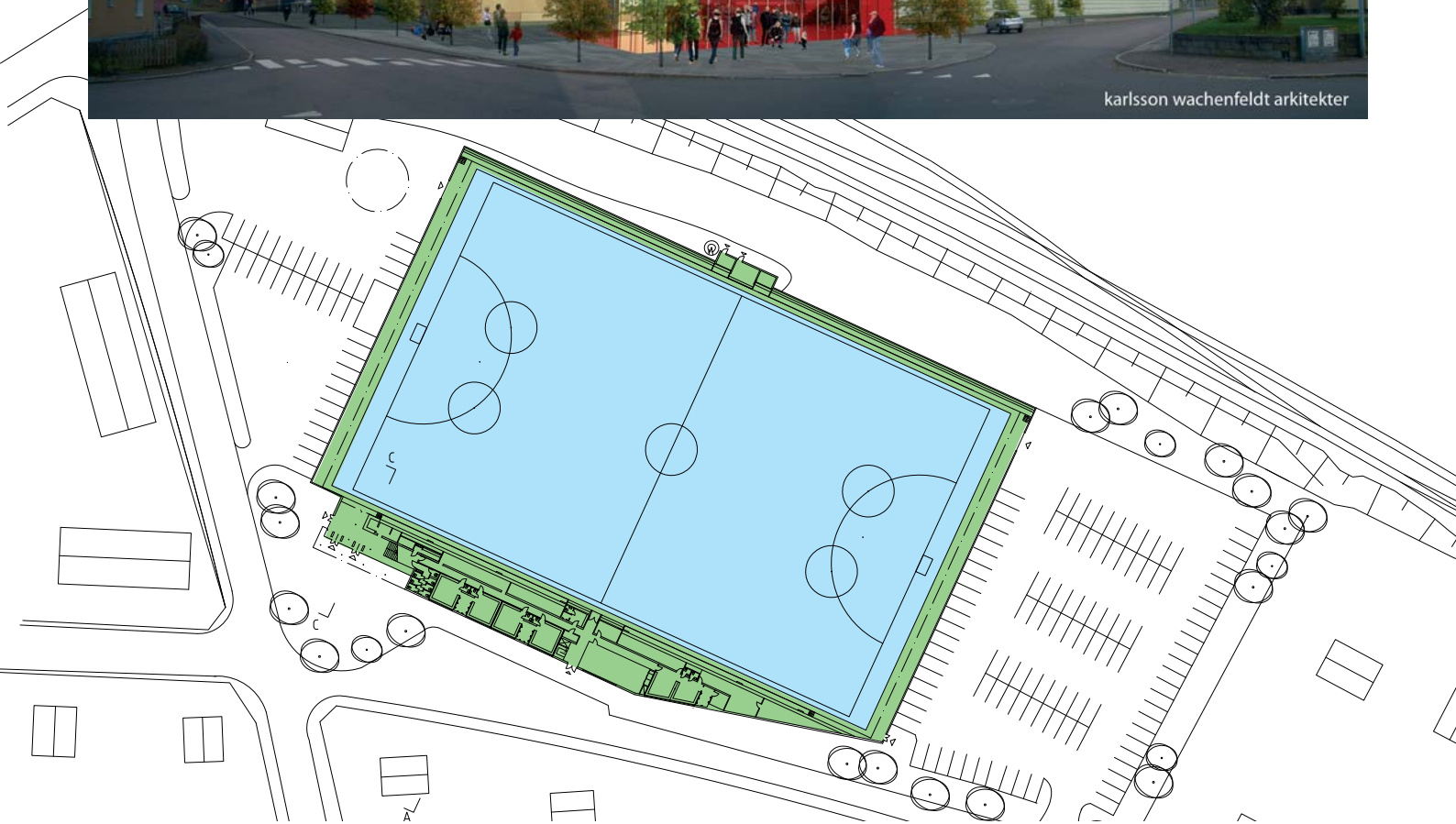
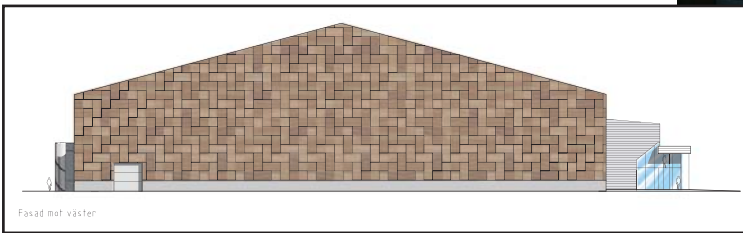
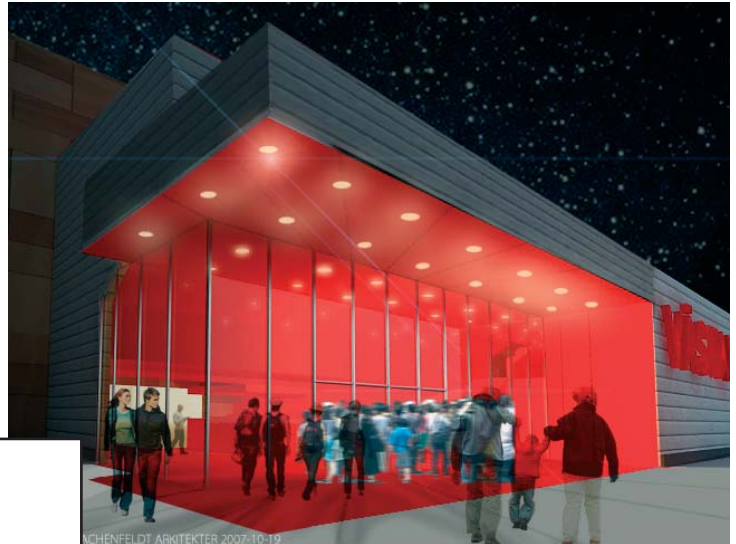
www.ifkmotalabandy.se/



Fagersta Event Arena

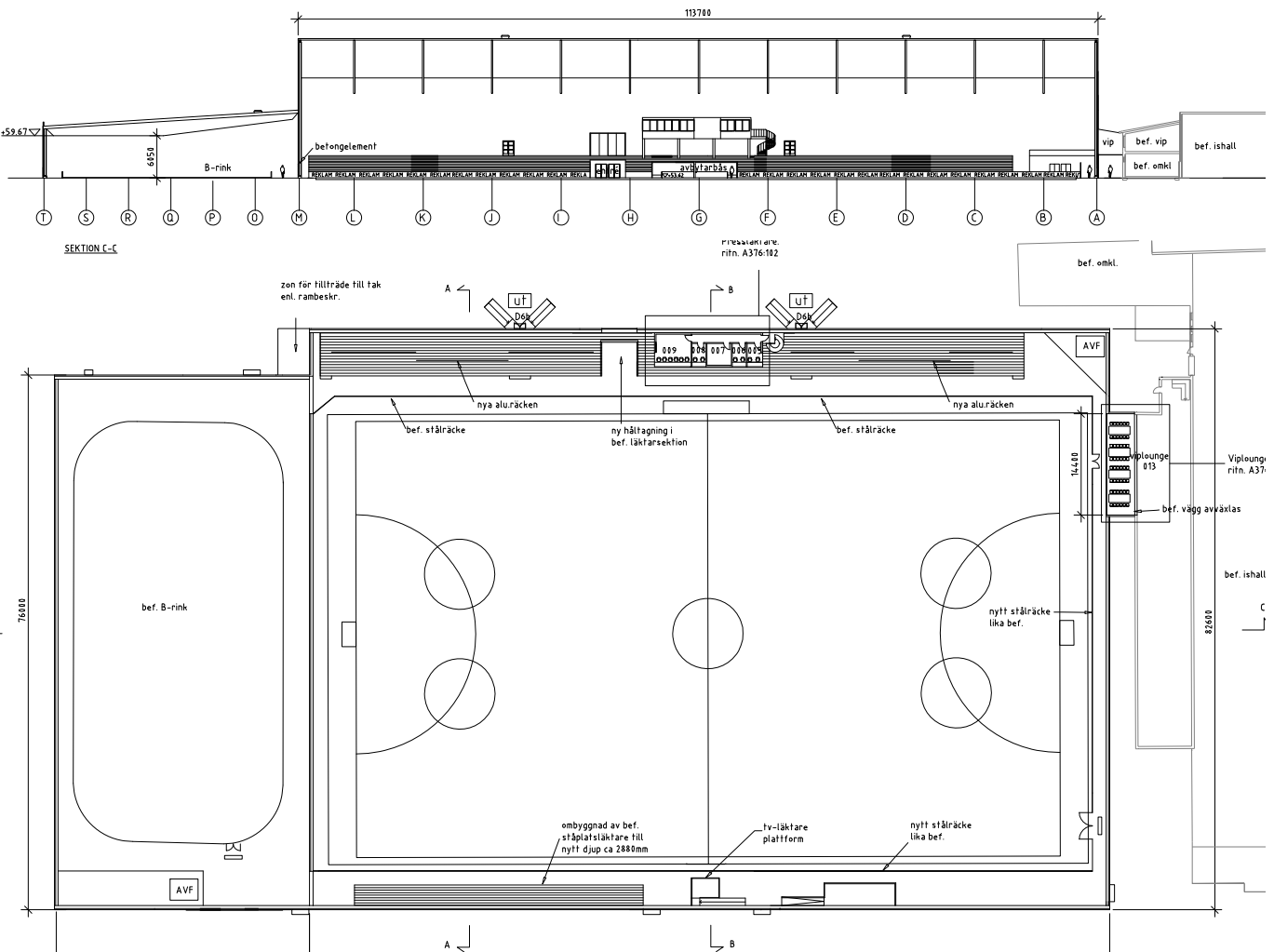
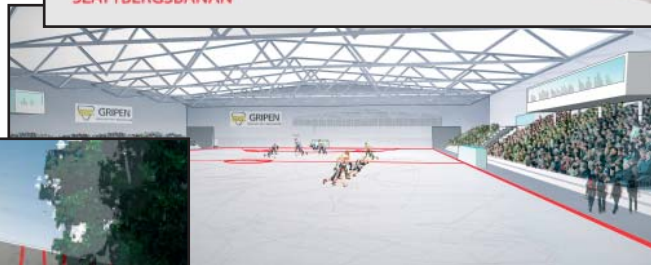
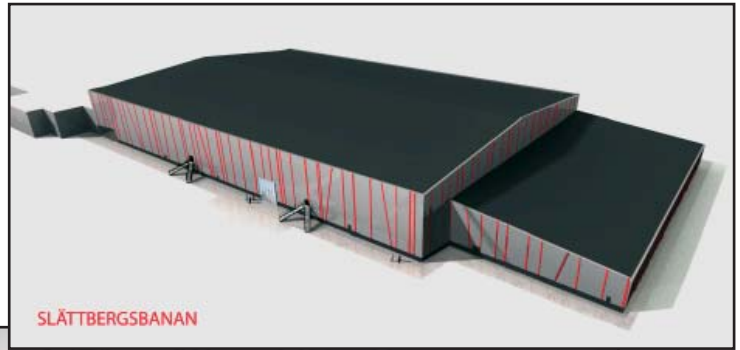
- arena with wooden construction
- covers existing playingfield, spectators platform and servicebuildings.
- 71 m span
- new servicebuildings
- ongoing

www.vastanforsbandy.se



Slättbergs bandyarena, Trollhättan

- insulated multiarena for Bandy and Icehockey
- due date: sep 2009
- 83m span
- 3000 spectators
- ongoing
- cost ~6 100 000 € (only hallbuildings)

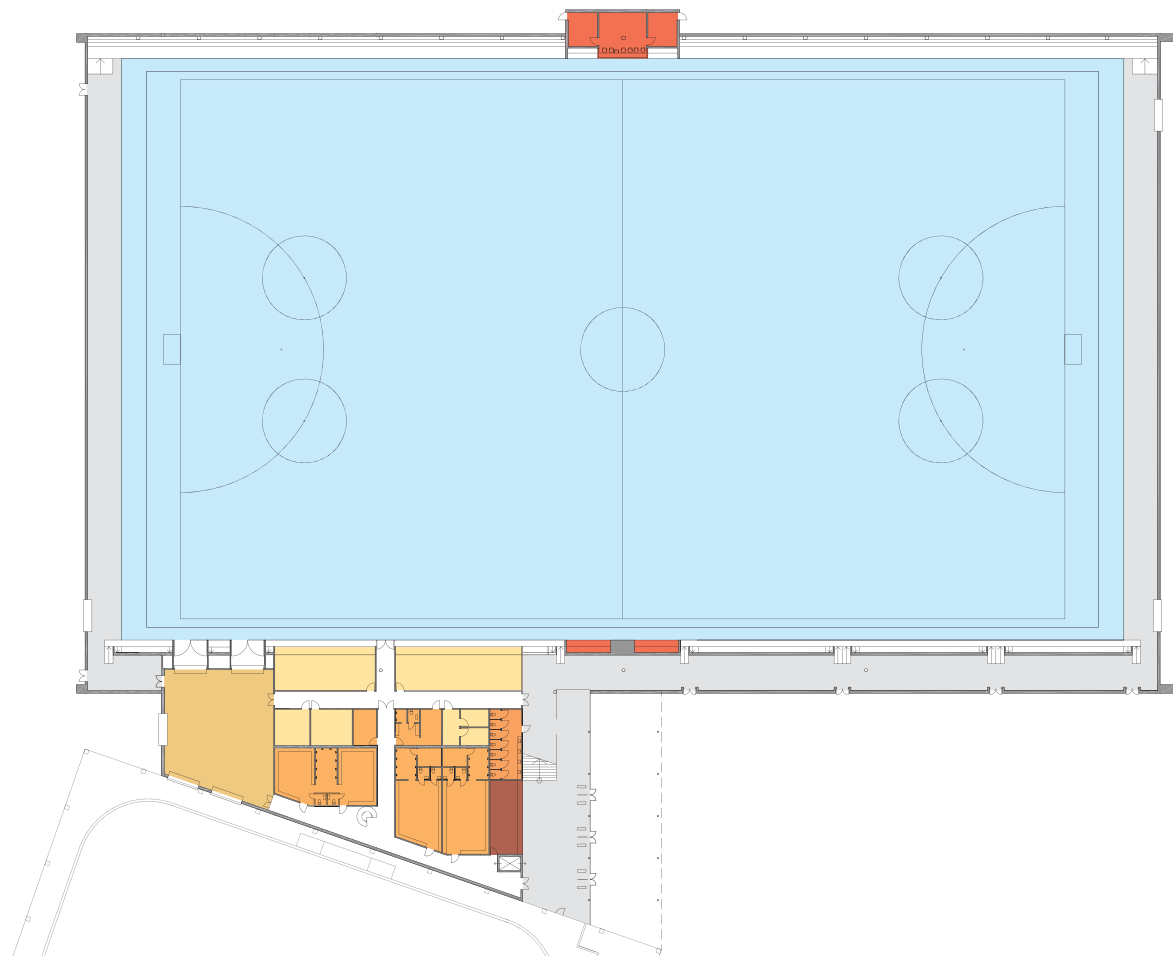


Finspång evenemangs- och bandyarena FEB AB

- highquality insulated arena
- new construction
- 88m span
- 2 500 spectators
- ongoing
- estimated cost
~7 100 000 €
(incl. service building)



www.finspongaikbandy.com/



more information:

Karlsson wachenfeldt arkitekter

www.kawarkitekter.se

+46 31 152524

info@kawarkitekter.se